

Mobile and Structured Reporting with SQL 2016

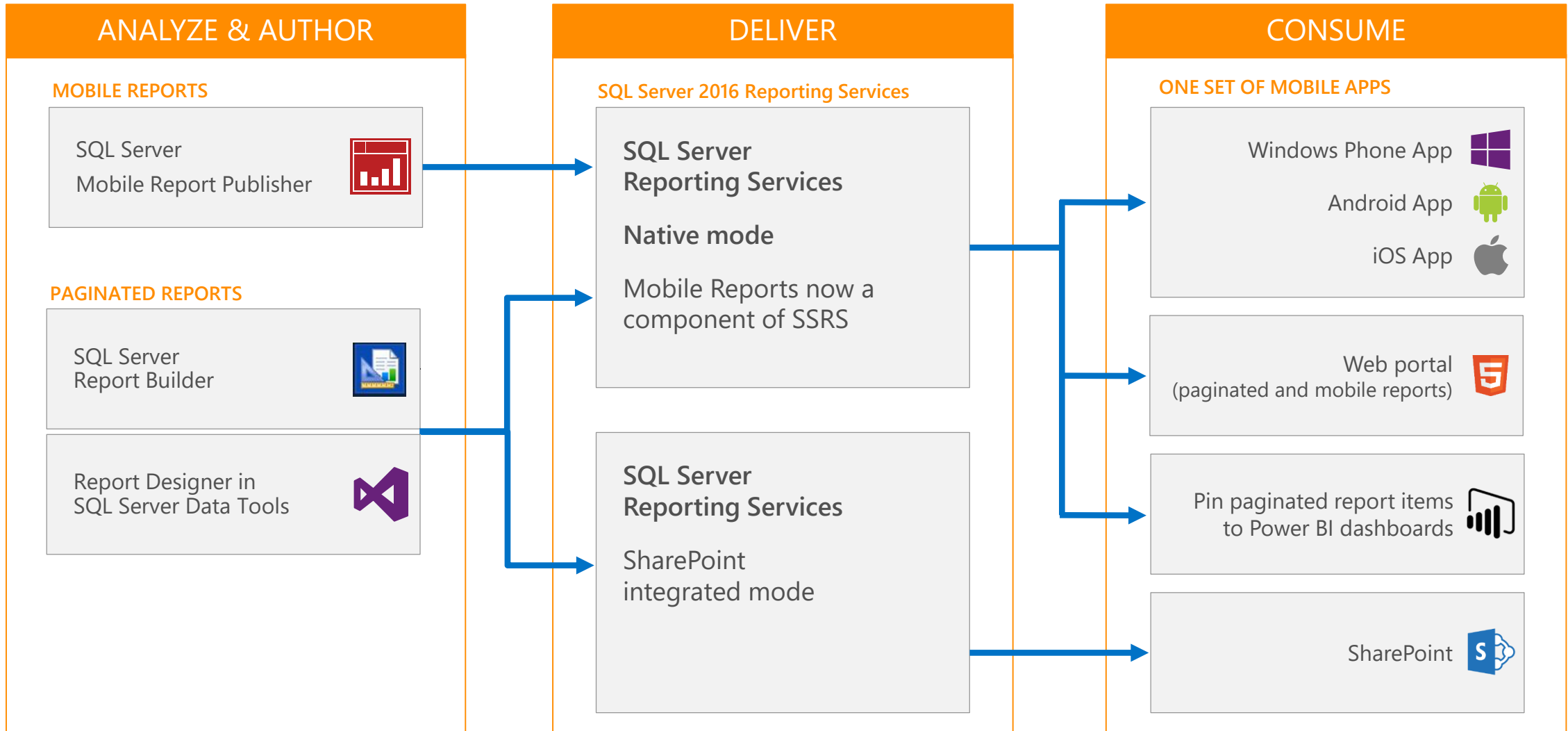
Kyle Wilson

Partner Technology Strategist - Microsoft



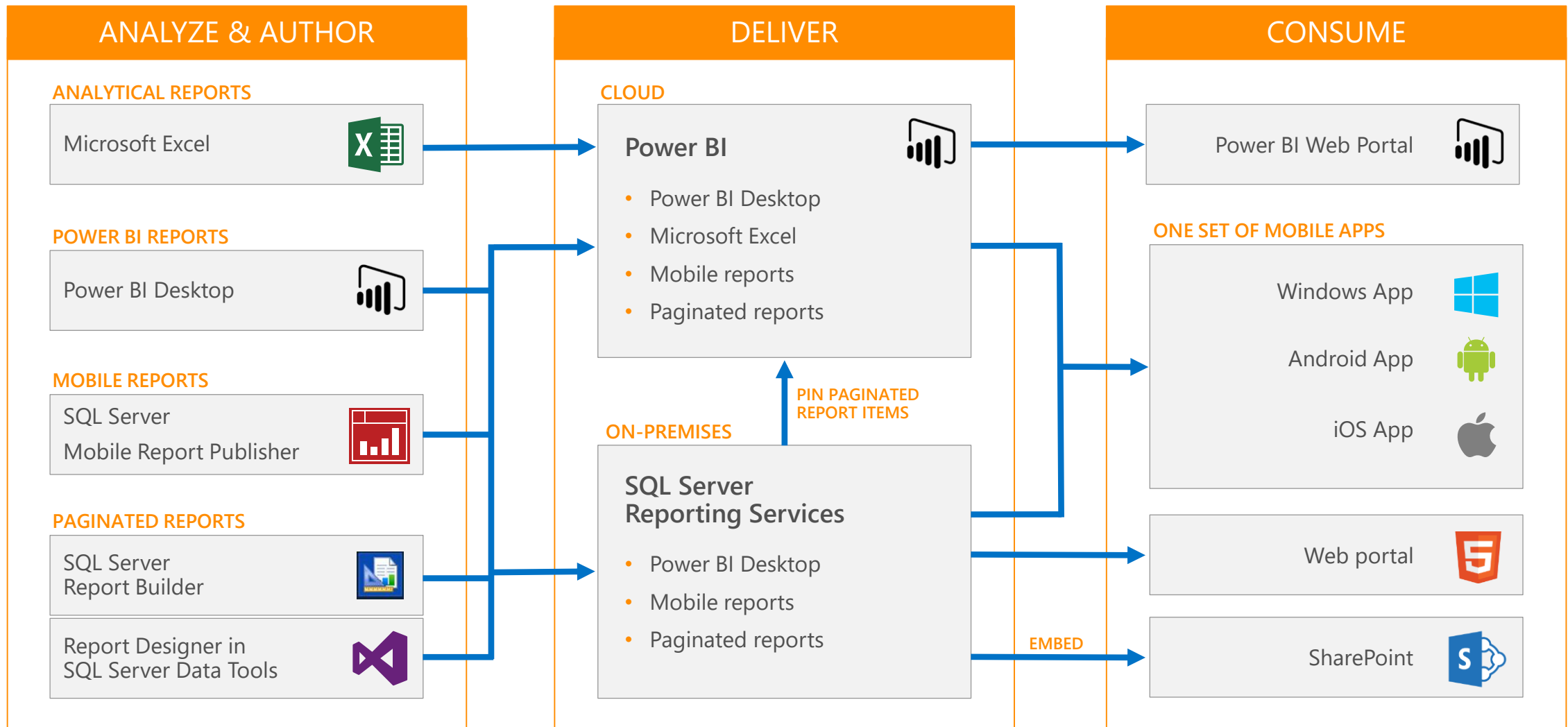
SQL Server 2016 BI at GA

Roadmap for SQL Server Reporting Services & mobile reporting



Future vision for SQL Server BI and Power BI

Beyond SQL Server 2016



SQL Server 2016

Core investment areas in Reporting Services & Analysis Services



Modern reports



Mobile reports



Enhanced analysis



Rich tools



Hybrid BI



SharePoint 2016
support

Reporting Services



SQL Server Reporting Services

On-premises solution for deploying and managing reports



Paginated reports

Design beautiful documents using updated tools and new features

Mobile reports

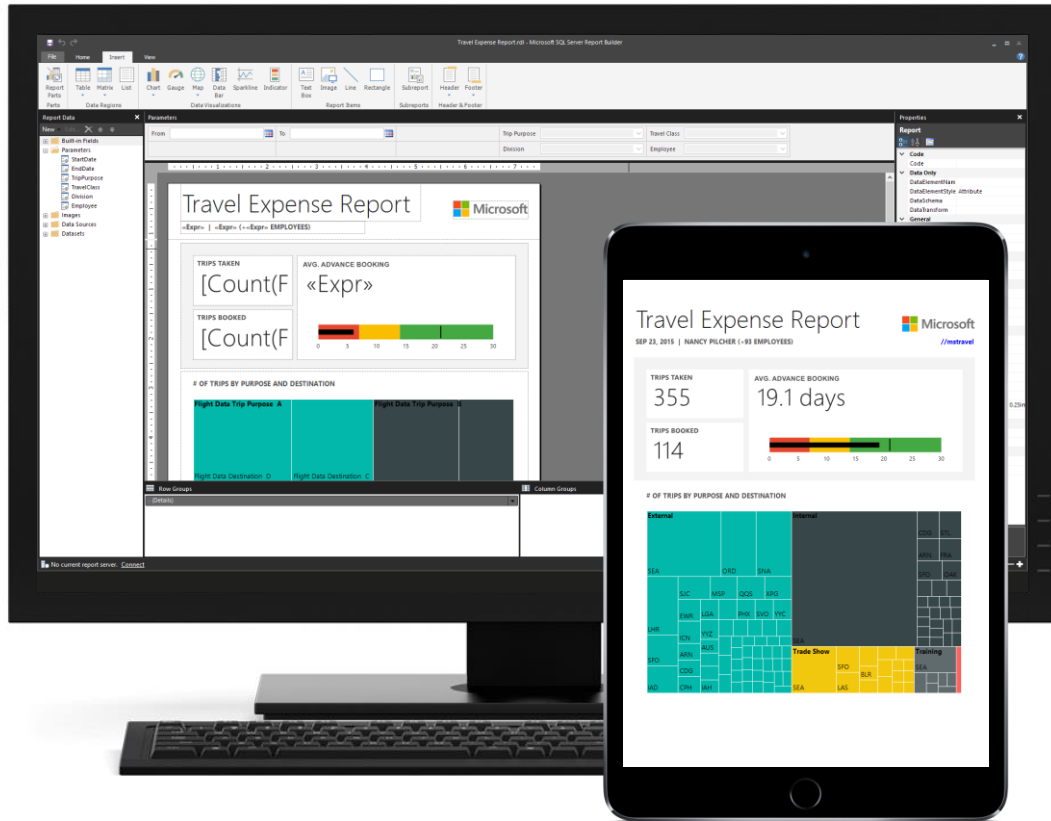
Create responsive, interactive reports optimized for mobile devices

New web portal

Consume both types of reports in one web portal using modern browsers

Modern paginated reports

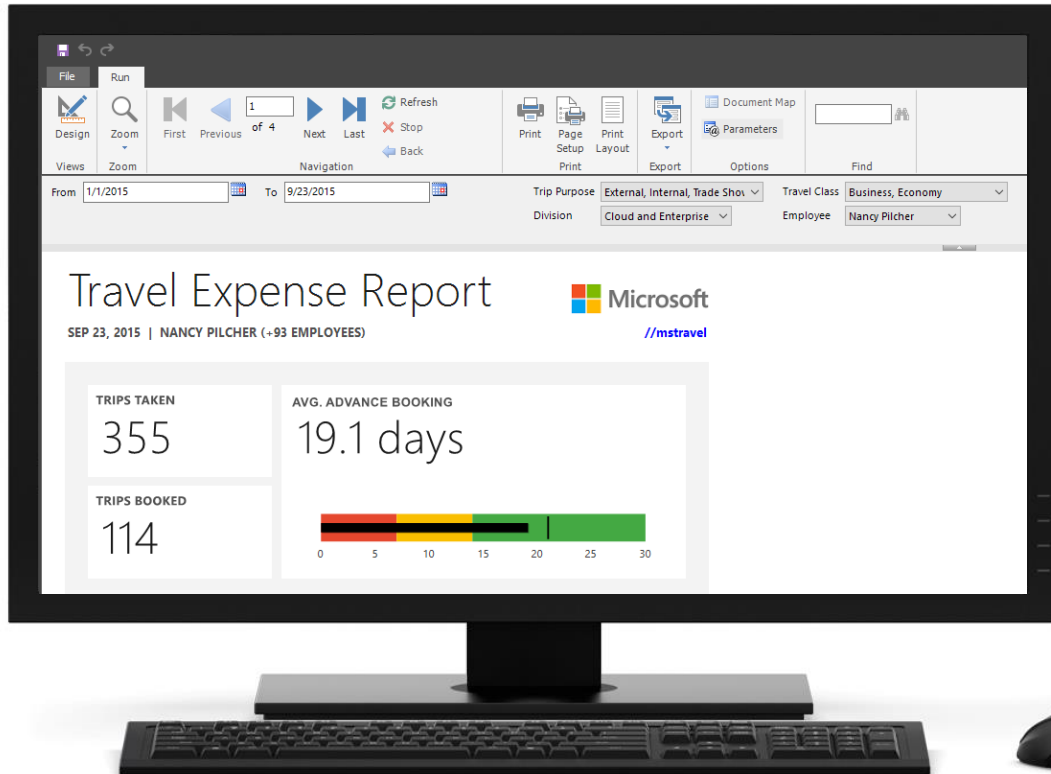
Design beautiful documents quickly and easily



- ➔ Modern chart and gauge styles
- ➔ Treemap and Sunburst chart types
- ➔ Updated Report Builder look-and-feel
- ➔ Visual Studio 2015 support
- ➔ Plugin-free printing

Customizable parameter layout

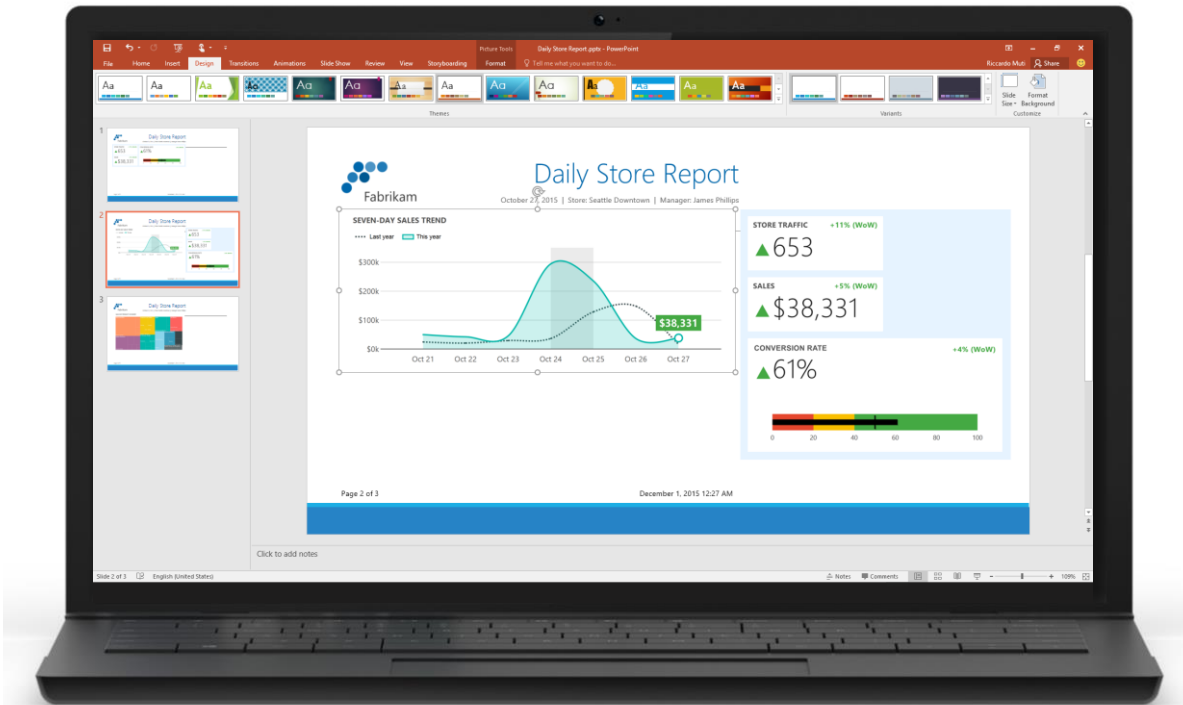
Position report parameters the way you want



- ➔ Position parameters across more than two columns
- ➔ Choose the position of each parameter
- ➔ Create space between groups of parameters

Export to PowerPoint

Generate presentations from paginated reports



- ➔ Generate slides including all report content in seconds
- ➔ Move and resize individual objects
- ➔ Export manually, schedule for email delivery, or generate programmatically

Pin report items to Power BI dashboards

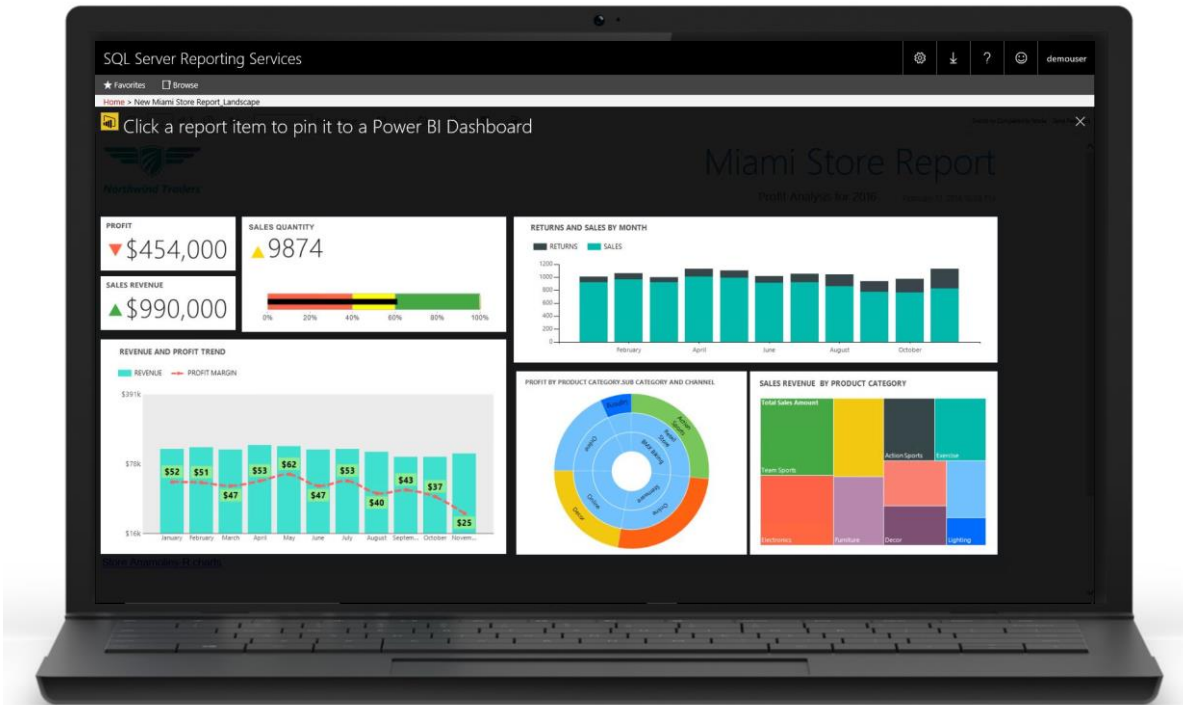
Get more from existing Reporting Services investments



- ➔ Monitor the most important metrics and trends in one place
- ➔ Pin charts, gauges, maps, and images as tiles to Power BI dashboards
- ➔ Drill through to source reports
- ➔ Refresh tiles on a schedule

Pin report items to Power BI dashboards

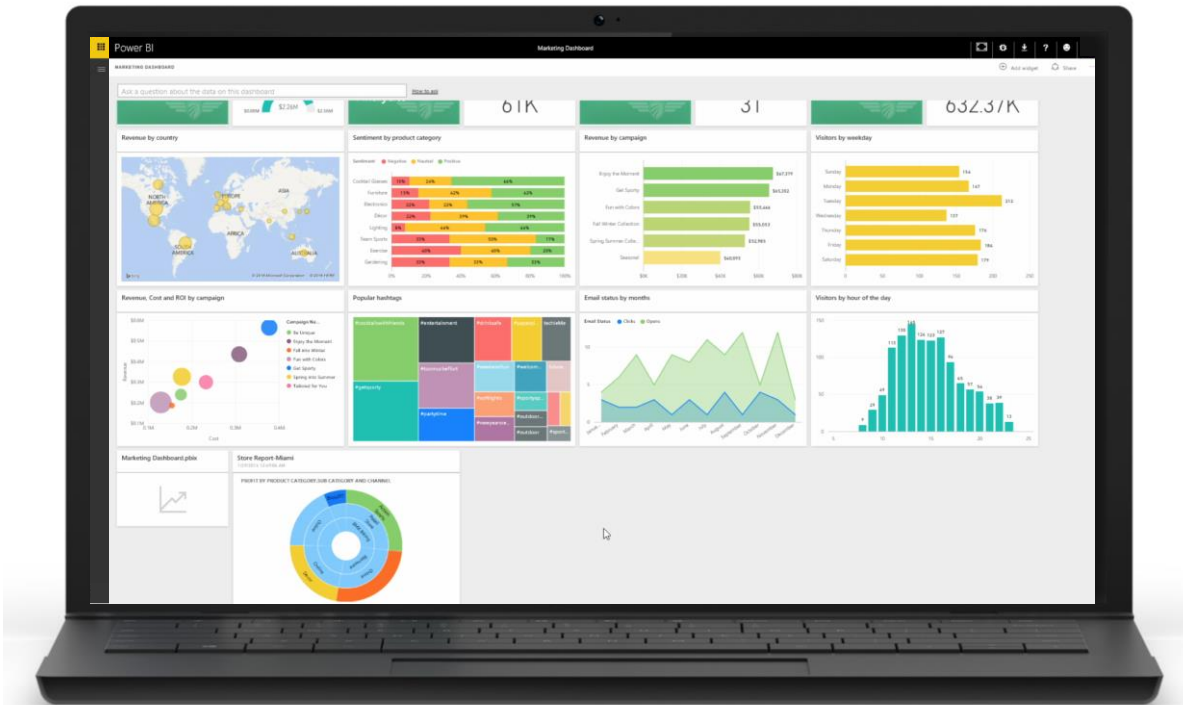
Get more from existing Reporting Services investments



- ➔ Monitor the most important metrics and trends in one place
- ➔ Pin charts, gauges, maps, and images as tiles to Power BI dashboards
- ➔ Drill through to source reports
- ➔ Refresh tiles on a schedule

Pin report items to Power BI dashboards

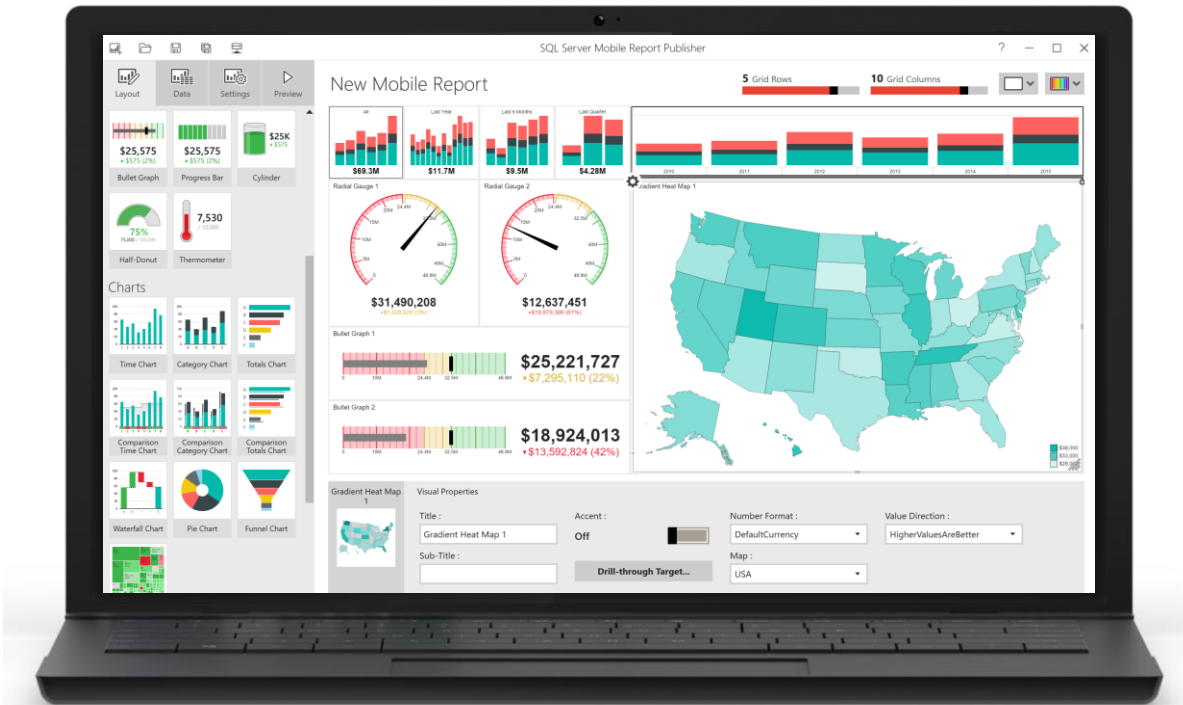
Get more from existing Reporting Services investments



- ➔ Monitor the most important metrics and trends in one place
- ➔ Pin charts, gauges, maps, and images as tiles to Power BI dashboards
- ➔ Drill through to source reports
- ➔ Refresh tiles on a schedule

Create interactive mobile reports

Responsive experiences for phones and tablets



- ➡ Drag-and-drop to create beautiful, interactive data visualizations
- ➡ Prototype in minutes with simulated data
- ➡ Access enterprise data sources by connecting to Reporting Services
- ➡ Customize layouts for different form factors

Consume mobile reports

Native apps for all major mobile platforms

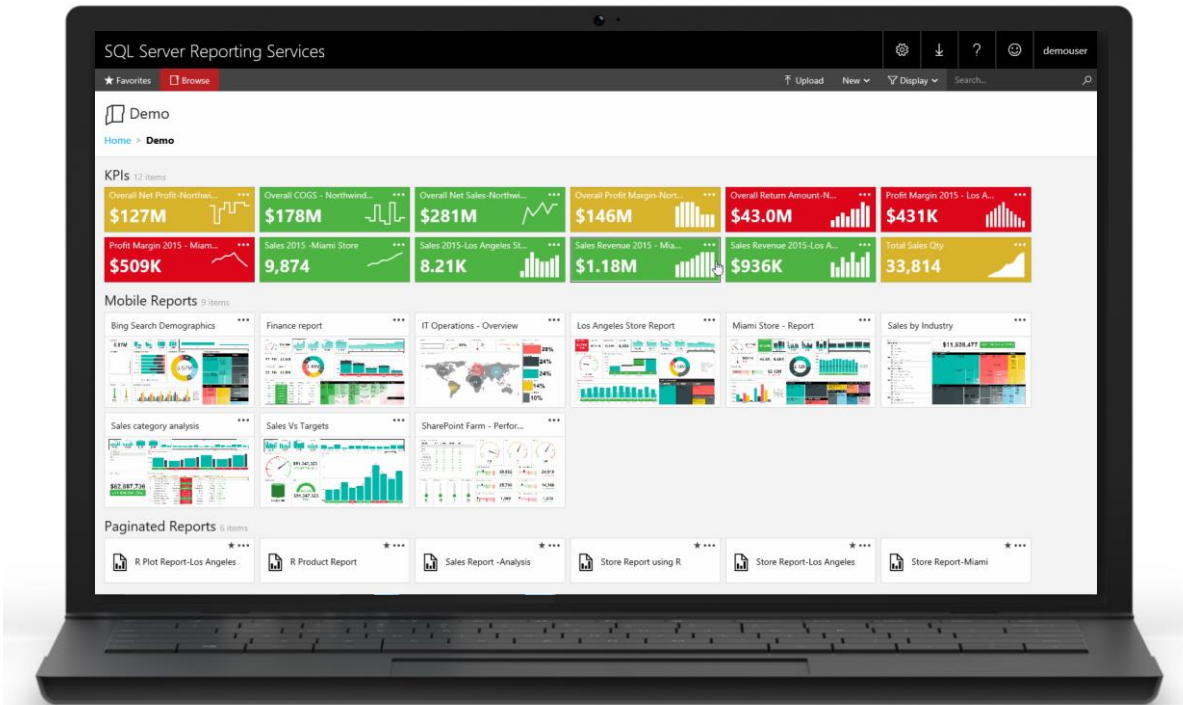


- ➔ One mobile app for Power BI and SSRS mobile reports
- ➔ Native mobile experience optimized for touch
- ➔ Keep data up-to-date with real-time query or scheduled data refresh
- ➔ Interact with mobile reports even when disconnected



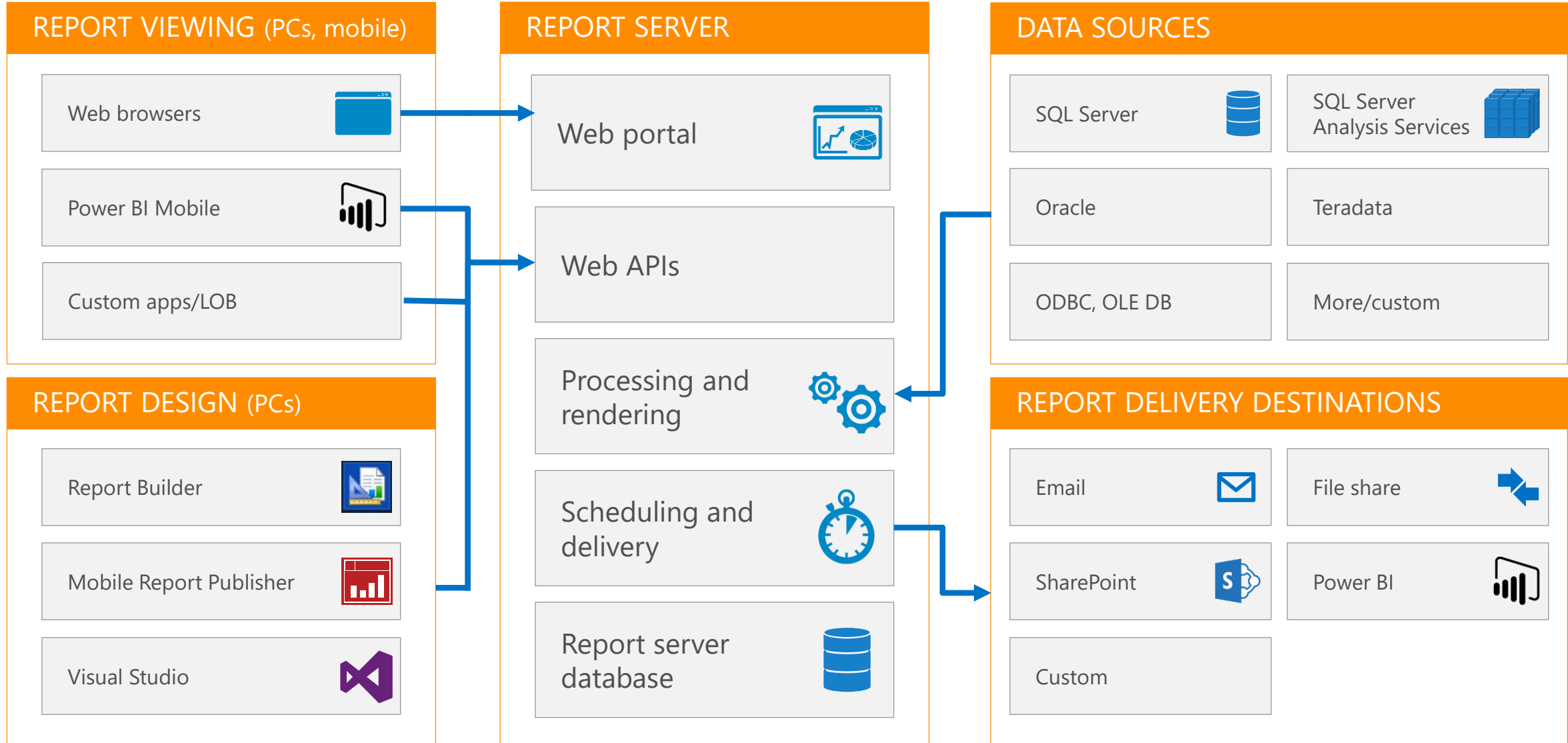
New, modern web portal for reports

Consume paginated and mobile reports in one place



- ➔ Access KPIs and both types of reports in one web portal
- ➔ Designed for modern browsers
- ➔ Built on HTML5 technology

Reporting Services architecture



Learn more about SQL Server 2016 BI

Get started today

- ➡ Visit the [Data Platform Insider](#) blog to learn more about the Microsoft BI reporting roadmap
- ➡ Read more on the [Reporting Services](#) blog
- ➡ Read more on the [Analysis Services](#) blog
- ➡ [Download](#) the latest SQL Server 2016 CTP
- ➡ Enable Hybrid BI with [Power BI gateways](#)

This content was developed prior to the product or service' release and as such, we cannot guarantee that all details included herein will be exactly as what is found in the shipping product. Because Microsoft must respond to changing market conditions, it should not be interpreted to be a commitment on the part of Microsoft, and Microsoft cannot guarantee the accuracy of any information presented after the date of publication. The information represents the product or service at the time this document was shared and should be used for planning purposes only. Information subject to change at any time without prior notice

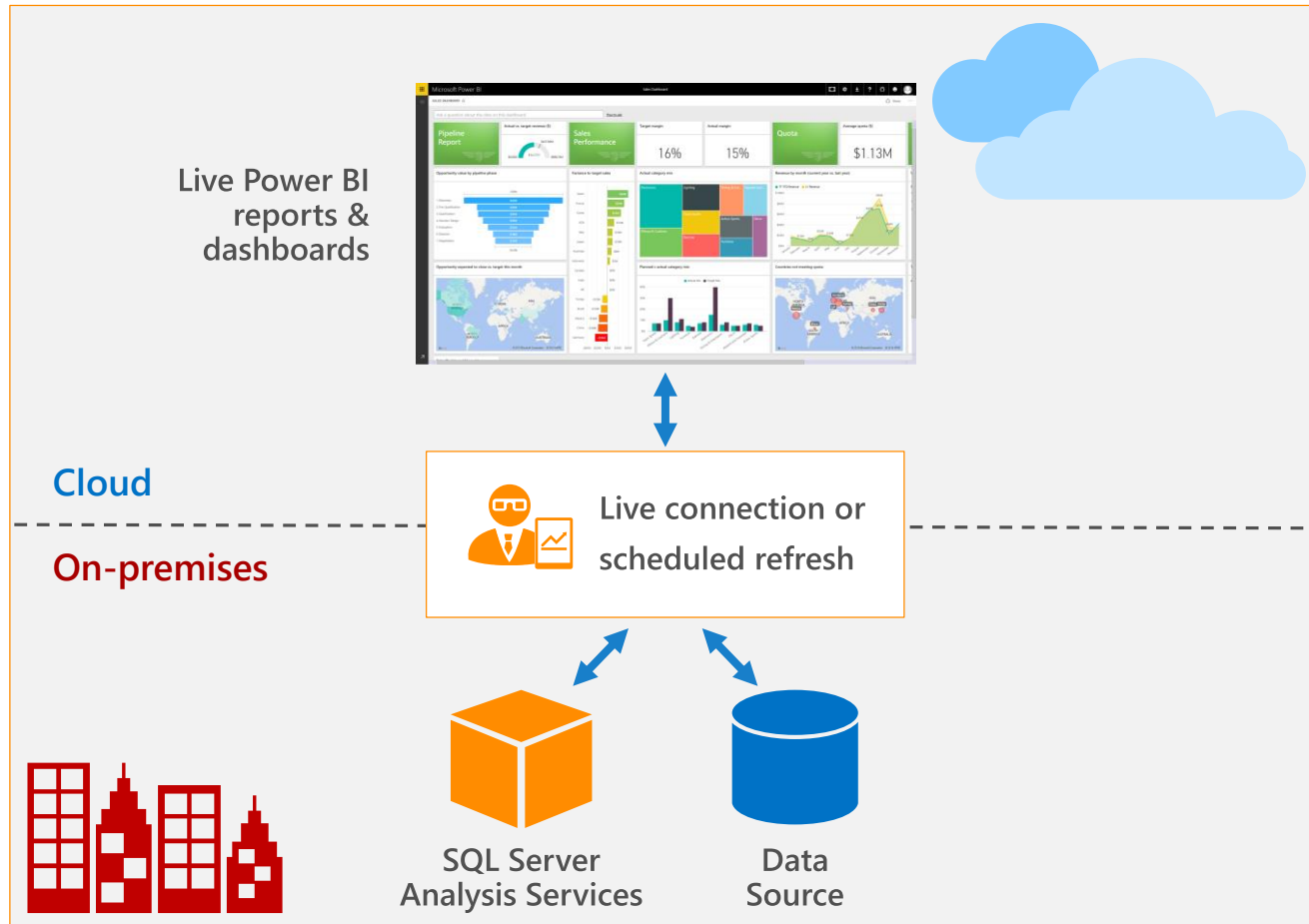


Hybrid BI



Connect to on-premises data from Power BI

Utilize existing investments



Access on-premises data any way you like:

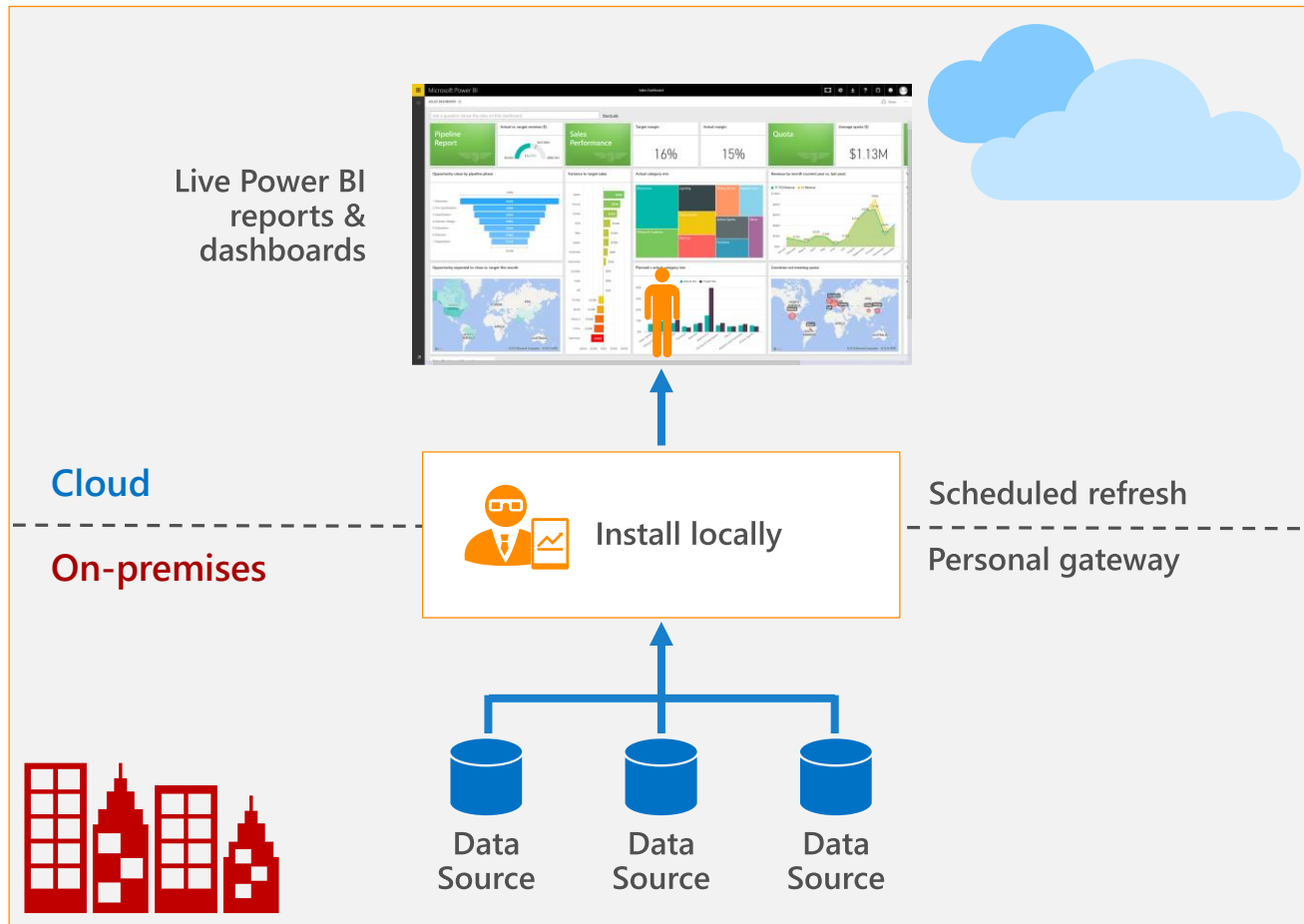
- ➡ Scheduled refresh
- ➡ Live connection

Connect to on-premises SQL Server Analysis Services models:

- ➡ Tabular and multidimensional

Power BI gateway for personal use

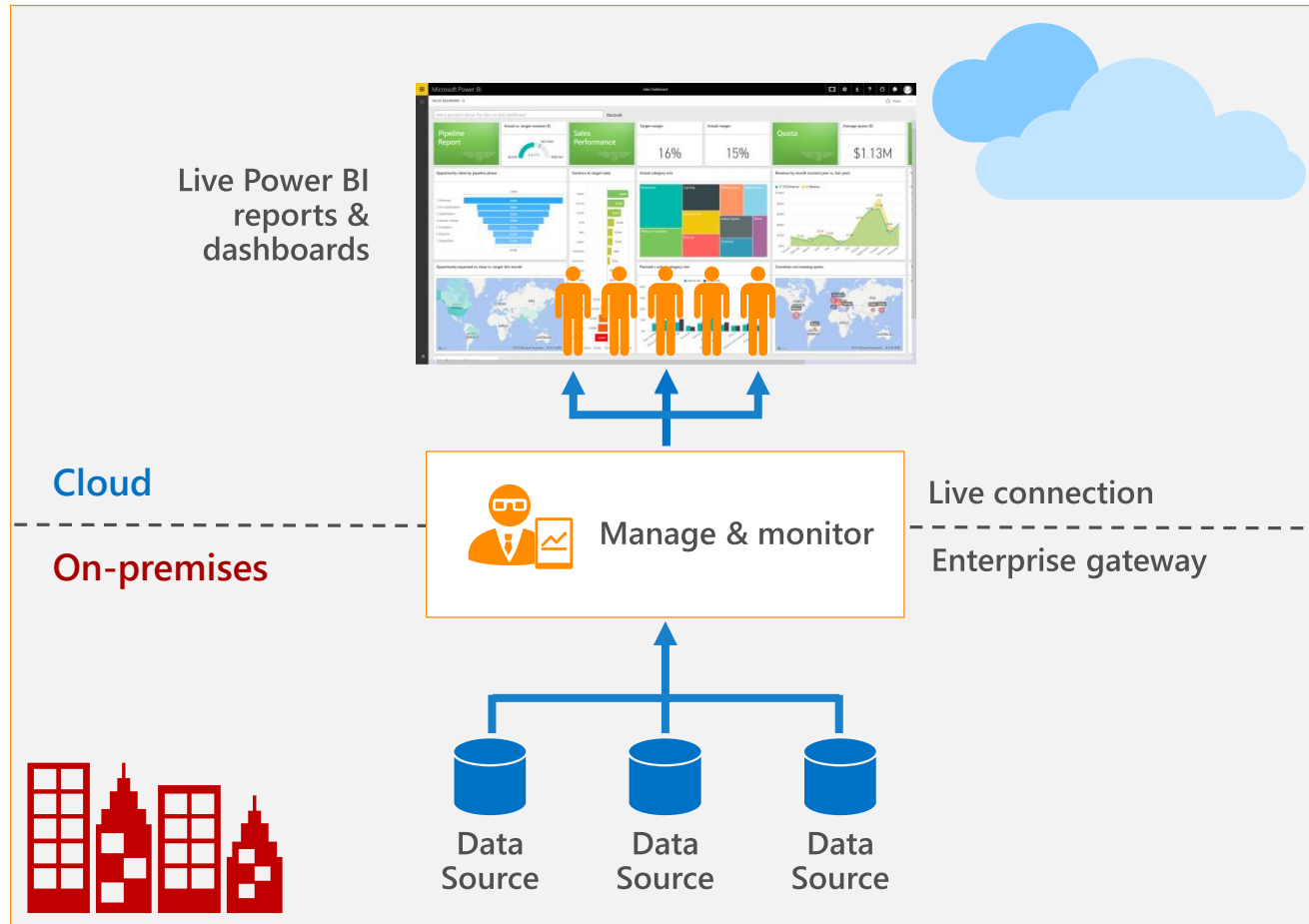
Empower analysts to securely & easily access on-premises data



- ➔ Keep data in Power BI up to date using scheduled refresh
- ➔ Anyone can refresh – no IT dependency
- ➔ Support for a large number of data sources
- ➔ Easy to use with a desktop-based lightweight one-click installer

Power BI Gateway for enterprise deployments

Enables IT to deploy and manage centrally to many users

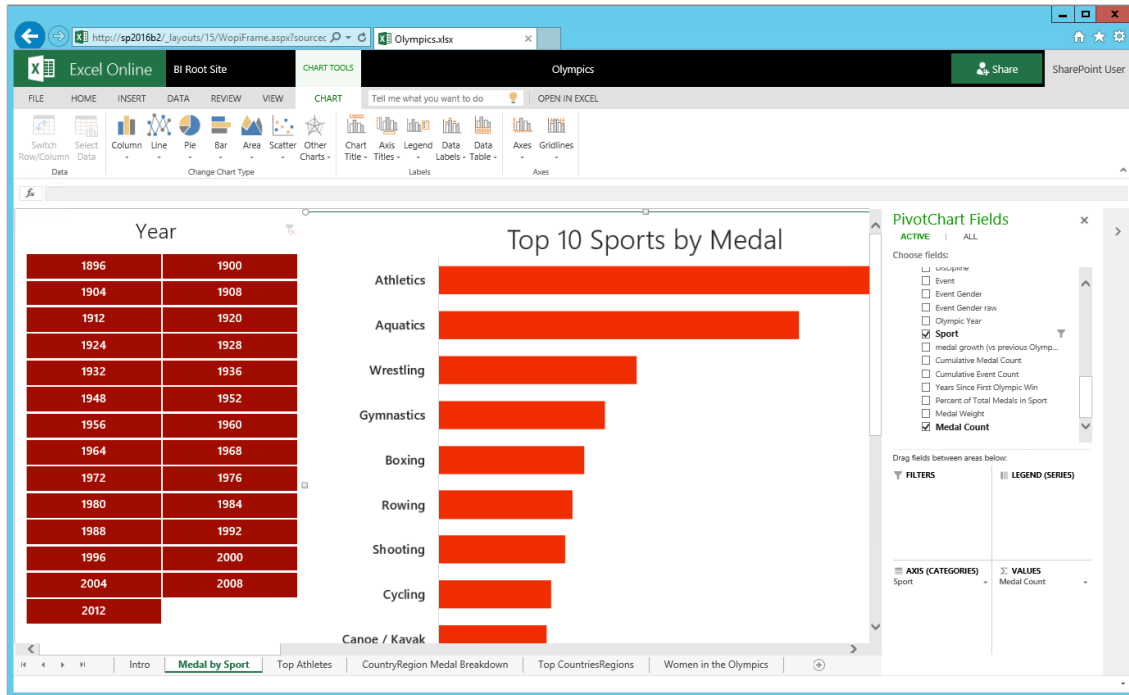


- ➔ Centralized way to refresh on-premises data in Power BI
- ➔ Control access to data sources
- ➔ Monitor gateways and data sources *COMING SOON
- ➔ Live, interactive query with on-premises data sources

Support for SharePoint 2016



Enhancements for SharePoint BI



Support for SharePoint 2016

- ➔ Edit mode for PowerPivot workbooks
- ➔ Support for Excel 2016 workbooks
- ➔ Scheduled data refresh for Power Query connections

Reporting Services enhancements

- ➔ New chart types, HTML5 rendering, plugin-free printing, export to PPT, and updated Report Builder